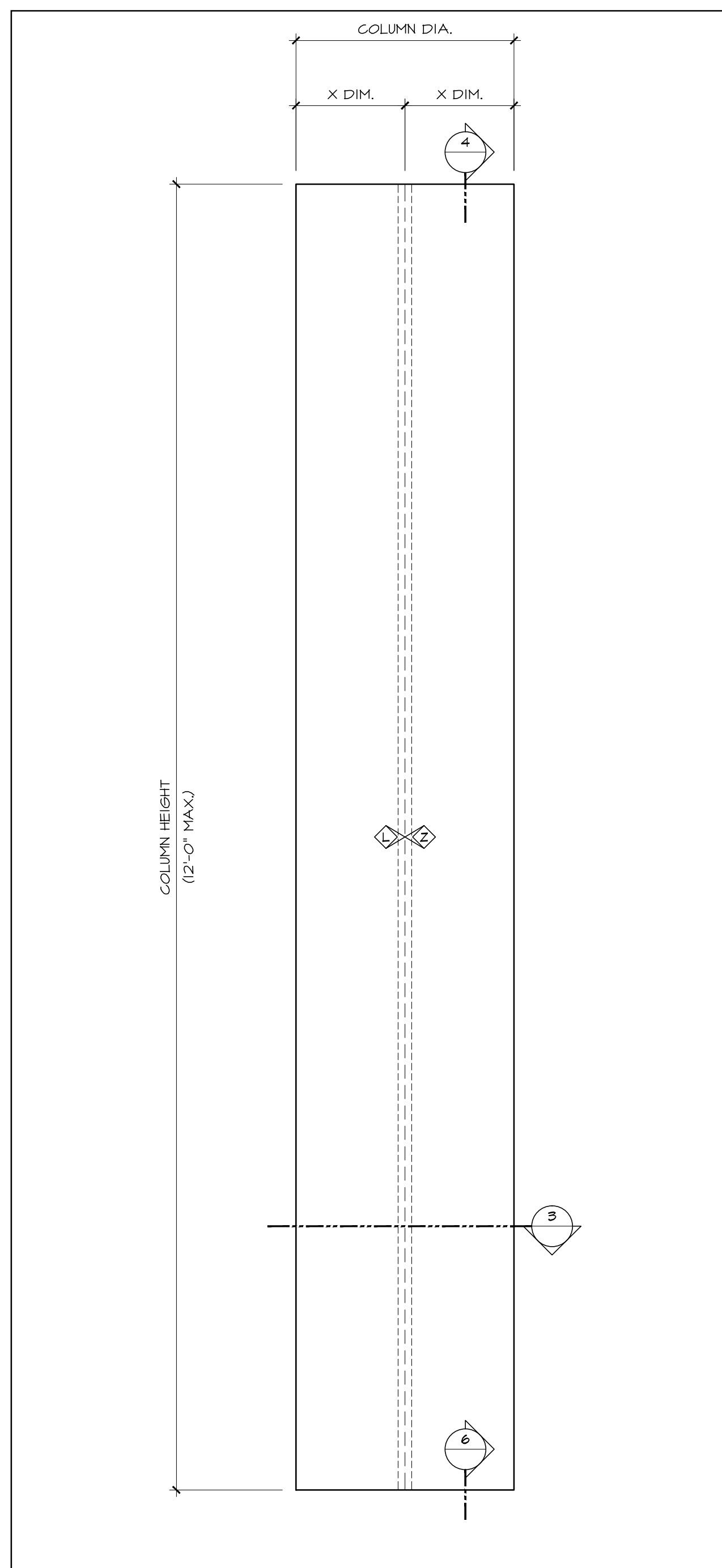
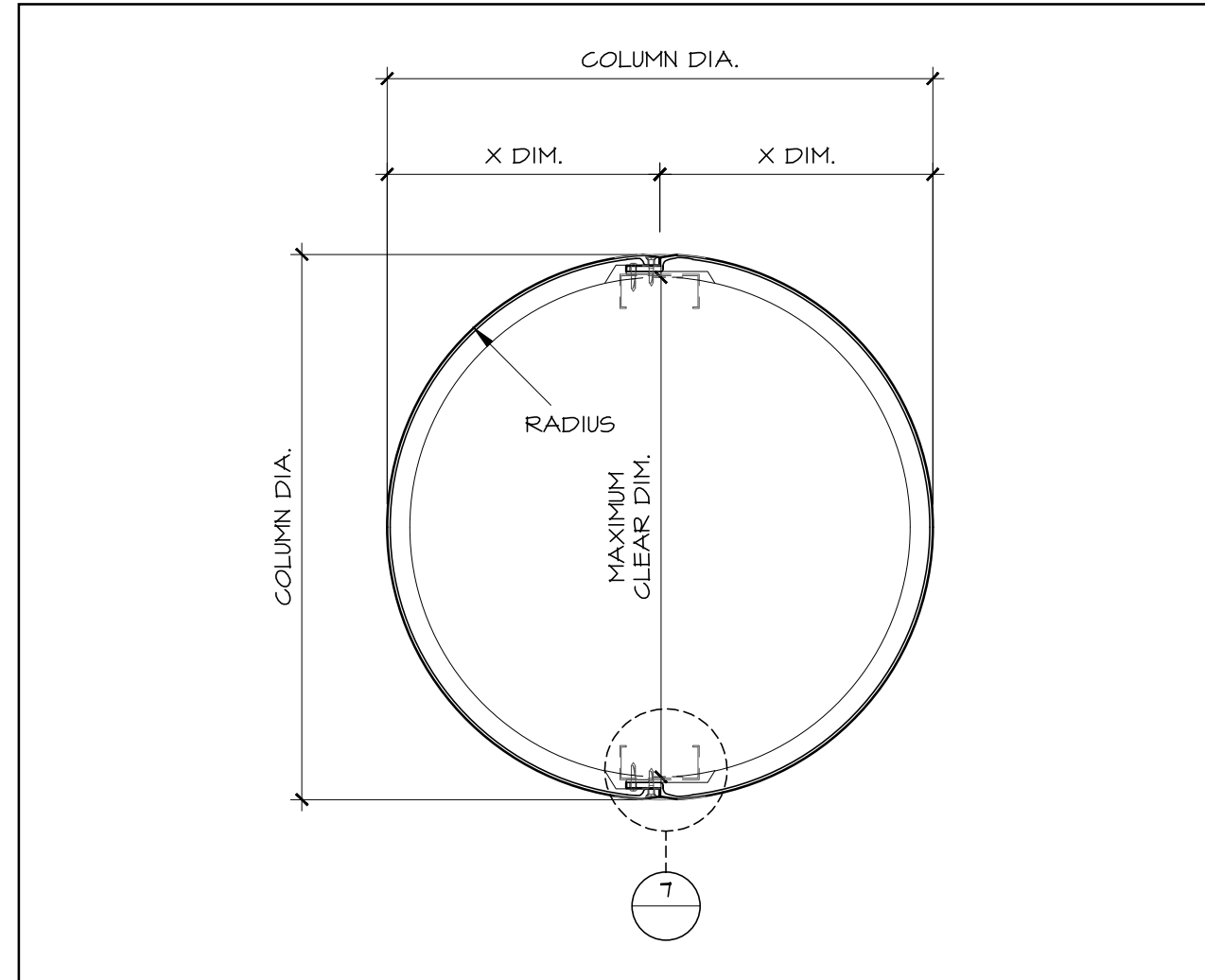


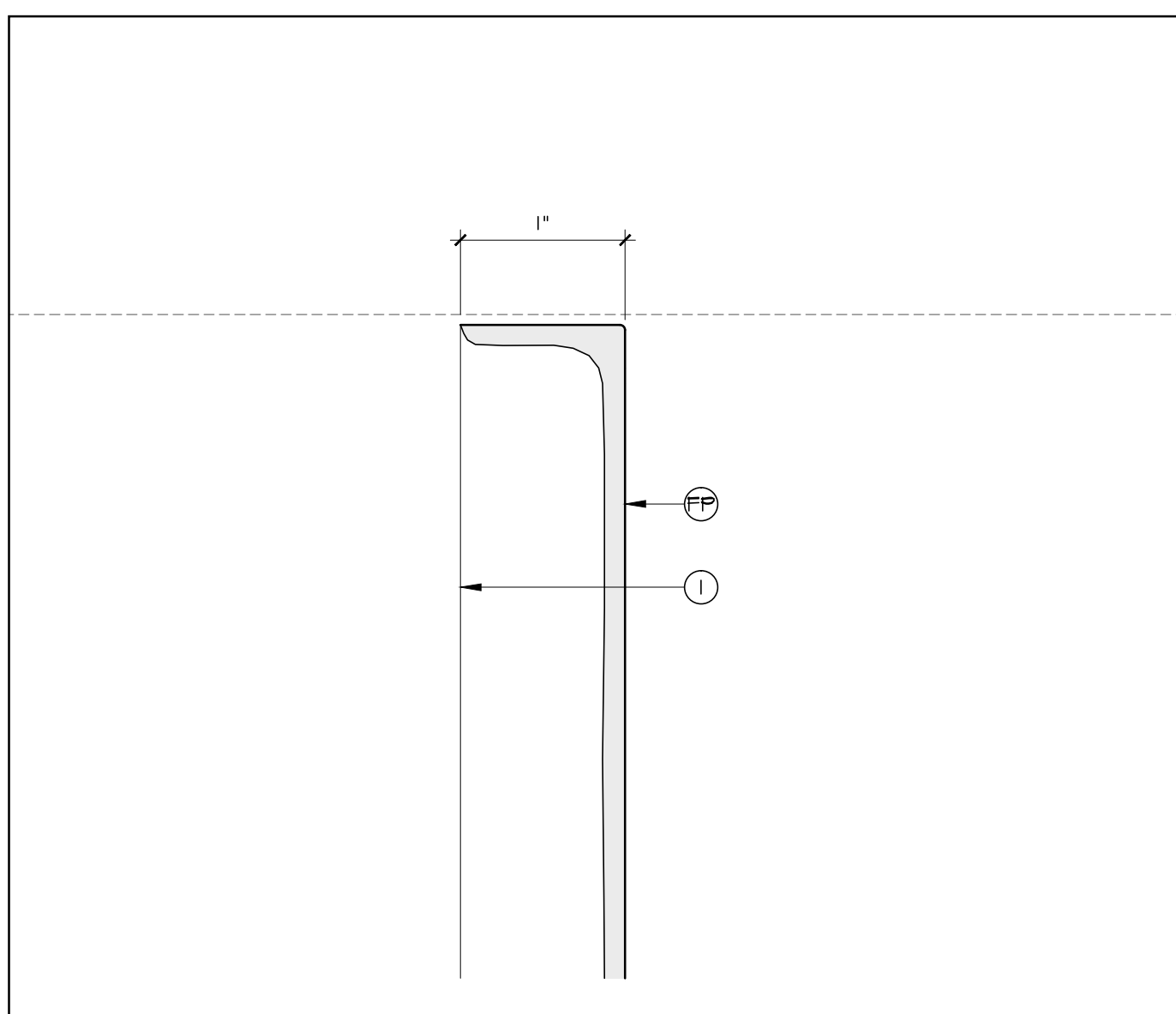
1 COLUMN ELEVATION
SCALE: 1"=1'-0"
REF:



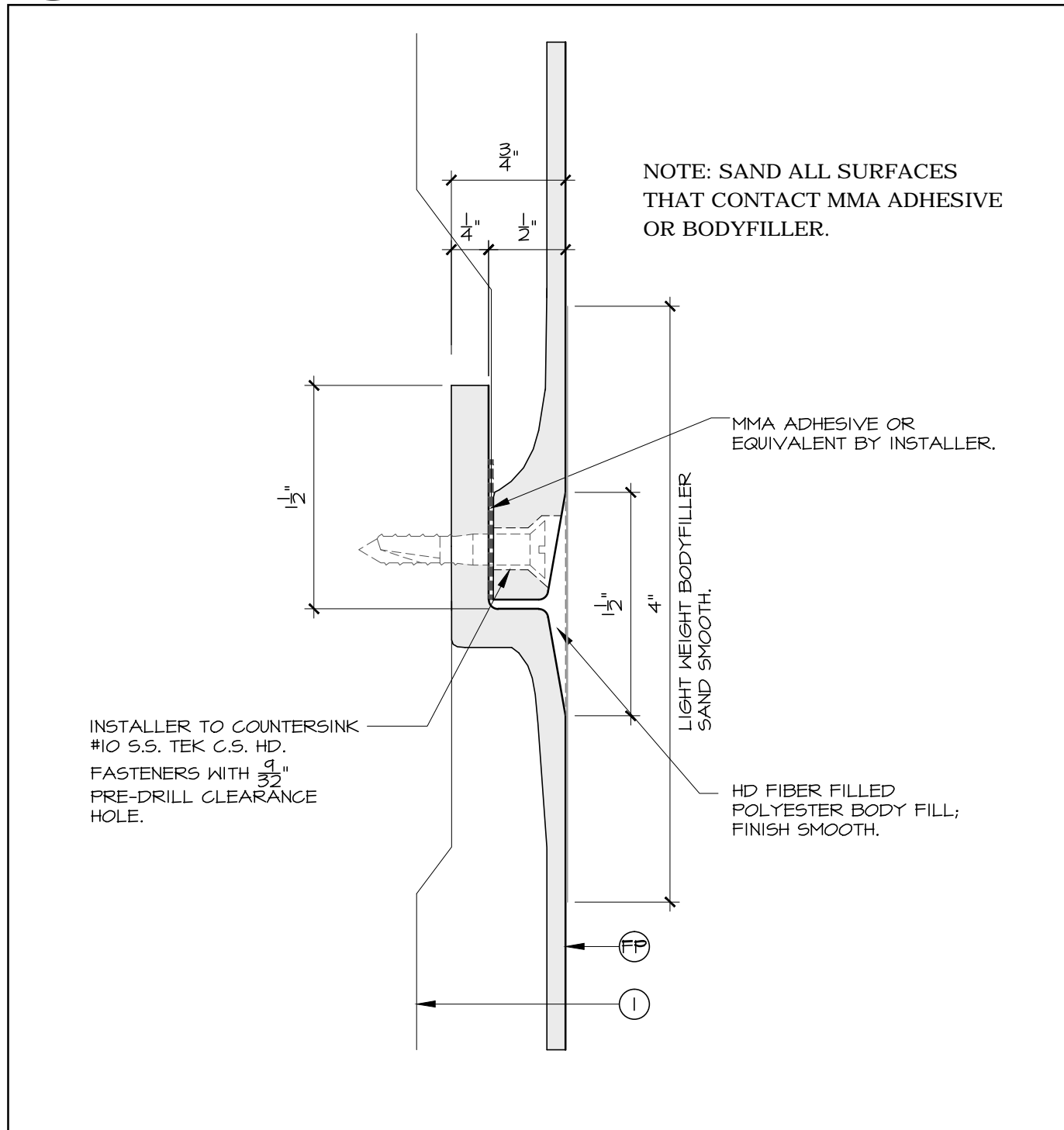
2 COLUMN ELEVATION
SCALE: 1"=1'-0"
REF:



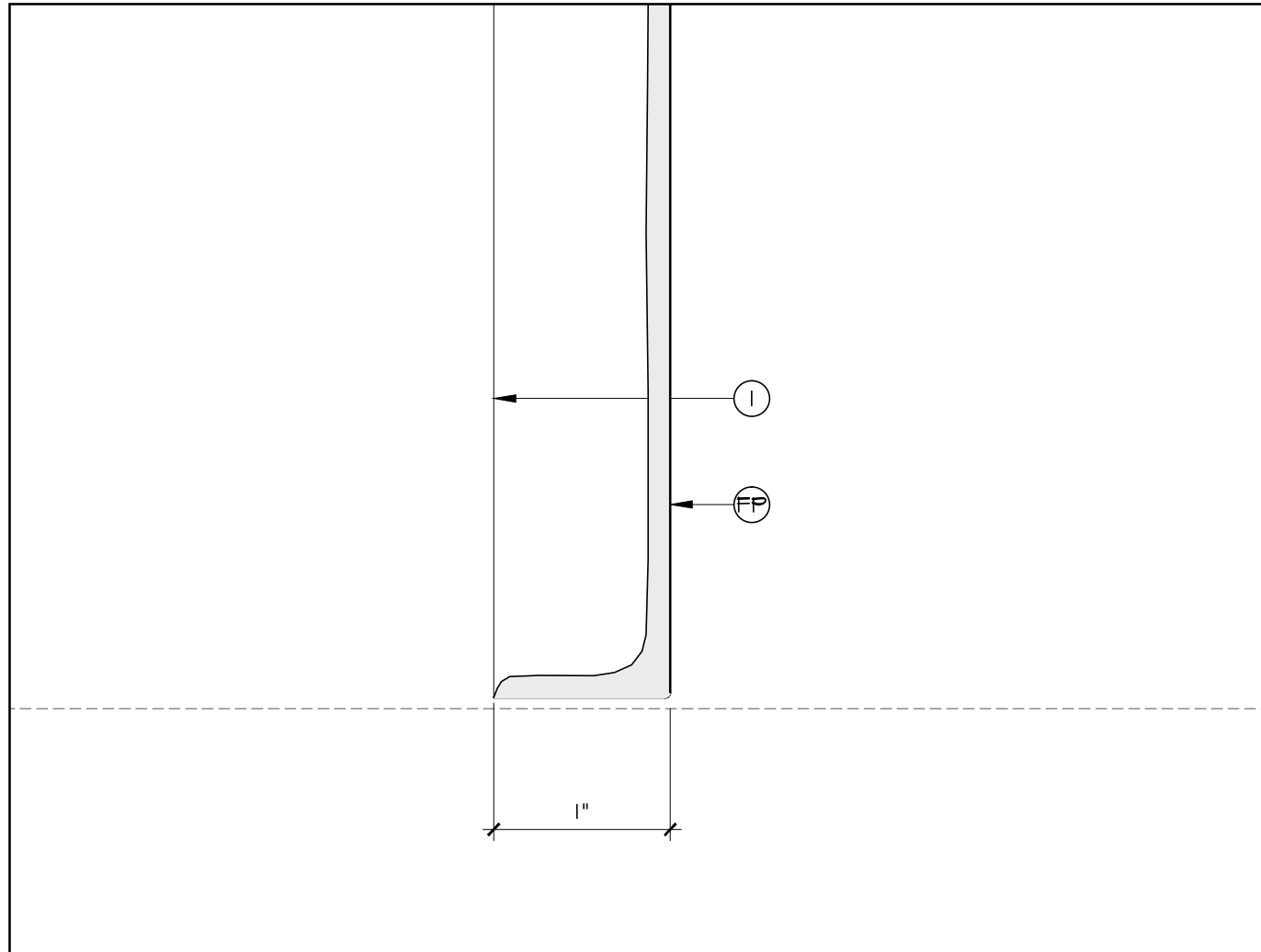
3 COLUMN PLAN SECTION
SCALE: 1 1/2"=1'-0"
REF:



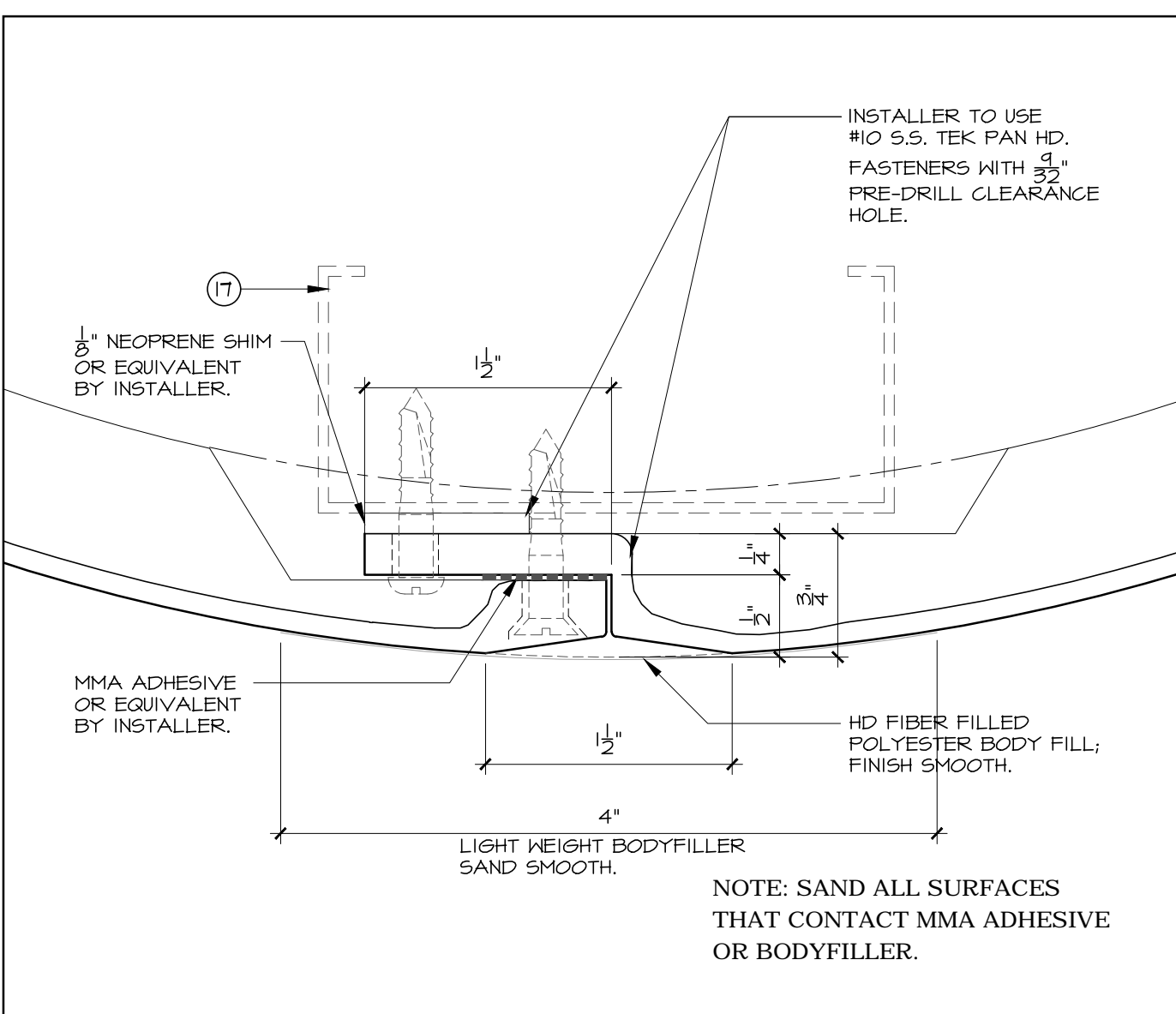
4 DETAIL AT COLUMN TOP
SCALE: FULL
REF:



5 HORIZONTAL STACK JOINT
SCALE: FULL
REF:



6 DETAIL AT COLUMN BOTTOM
SCALE: FULL
REF:



7 OVERLAP JOINT DETAIL
SCALE: FULL
REF:

STANDARD LEGEND

F.R.P (FP)

(FP) F.R.P [FIBER REINFORCED PLASTIC - TO BE FIELD FINISHED]

1 N/A	16 SUB-FRAME SYSTEM
2 TAPE REVEAL [FIELD TAPED - IF SPECIFIED]	17 FRAMING, BLOCKING, ETC.
3 JOINT [V]	18 POLYURETHANE SHIMS
4 DRAFT	19 STAINLESS STEEL SCREWS (FILLED AS REQ'D)
5 N/A	20 CAULKED JOINT
6 N/A	21 ADHESIVE
7 RECYCLED PLASTIC REINF. [CONT.'S]	22 "ZOOPOXY" FILLER OR EQUAL
8 STEEL "L" OR "Z" [NOT CONT.'S]	23
9 BUILT-IN "FIBERGLASS STIFFENERS" REINF. [600MM ON CENTER]	24
10 N/A	
11 BUILT-IN LOOP [HANGER]	
12 BUILT-IN FIBERGLASS GUSSET	
13 BEVEL EDGES / CORNERS	
14 FALSE JOINT	
15 N/A	

MISCELLANEOUS

(XX) NUMBER DENOTES RECOMMENDED INSTALLATION SEQUENCE

* ASTERISK DENOTES SITE CUT PART

ALL BUILT-IN STEEL IS GALVANIZED

CERTIFICATION

FORMGLAS IS REGISTERED AS AN ISO 9001-2000 COMPANY

- F.R.P (FP) NOTES**
ALWAYS FIELD FINISHED
- 1. INSTALLATION**
- FASTENING, SUSPENSION AND BRACING METHODS INDICATED ARE TO BE CONSIDERED A GUIDE ONLY. THE INSTALLATION CONTRACTOR SHALL ABIDE BY LOCAL CODES, VERIFY JOB CONDITIONS AND ADJUST INSTALLATION PROCEDURES ACCORDINGLY.
 - SOME SITE CUTTING AND/OR GRINDING OF PARTS MAY BE REQUIRED.
- 2. COUNTERSINK SCREW HOLES**
- HOLES SHOULD BE PATCHED WITH "ZOOPOXY" OR EQUAL TYPE FILLER.
 - ALWAYS USE STAINLESS STEEL SCREWS WHEN FASTENING.
- 2A. JOINTS**
- JOINTS SHOULD BE CAULKED TO ALLOW FOR MOVEMENT.
 - NEVER TAPE THE JOINTS BETWEEN UNITS UNLESS SPECIFIED.
- 3. FINISHING & PAINTING**
- SURFACE IMPERFECTIONS WILL OCCUR AT TIMES. SAND OR PATCH WITH AUTO BODY FILLER OR "ZOOPOXY" TYPE FILLER. USE ONLY ACRYLIC LATEX BASED FINISHES APPROVED FOR EXTERIOR USE.
 - GLOSS PAINT IS NOT RECOMMENDED.
- 4. DRAFT ANGLES AND RADIUS**
- DRAFT ANGLES ARE REQUIRED FOR MOLD RELEASE. UNLESS SPECIFICALLY NOTED, REVEALS, SETBACKS OR RETURNS WILL BE DRAFTED BETWEEN 5° AND 10°. ON AVERAGE FOR EVERY 10MM OF HEIGHT 1MM OF DRAFT IS REQUIRED.
 - ALL CORNERS WILL HAVE A SLIGHT CHAMFER OR RADIUS UNLESS SPECIFICALLY NOTED.
- 5. TOLERANCES**
- | | |
|--------------------------------|---------------------------|
| SHELL THICKNESS | ±1/8" (3.2MM) |
| DIMENSIONAL IN ALL DIRECTIONS | (MIN.) ±1/4" (3.2MM) |
| WARPAGE OR BOWING | ±1/8" PER MT (2MM PER MT) |
| FIELD SHIMMING MAY BE REQUIRED | |
- 6. ITEMS EXCLUDED**
- UNLESS SPECIFICALLY NOTED, CAULKING, HARDWARE, CLIPS, FASTENERS, ADHESIVE, BONDO, etc. ARE TO BE SUPPLIED BY OTHERS.
- 7. SEE FORMGLAS SPECIFICATIONS**
FOR ADDITIONAL INFORMATION
- 8. MOLDS**
- ALL "CUSTOM MOLDS" WILL BE DESTROYED ONE MONTH AFTER DELIVERY OF MATERIALS. CONTRACTOR/ OWNER MAY NEGOTIATE TO RETAIN MOLDS.
- 8.NOTE**
- DRAWING APPROVAL CONSTITUTES REVIEW OF CONTENT. STANDARD LEGEND, GENERAL NOTES, COLORS, FINISHES/PATTERN AND DIMENSIONAL VERIFICATION.
FORMGLAS PRODUCTS LTD. WILL PROCEED WITH MANUFACTURING UPON RECEIPT OF WRITTEN APPROVAL OF SHOP DRAWINGS.

ISSUED FOR APPROVAL

REVISIONS DATE

Formglas
Products Ltd.

2 CHAMPAGNE DRIVE, TORONTO, ONT. M3J-2C5 CANADA
TEL: (416) 635-8030 FAX: (416) 635-6588
338 FOURTEEN ST, SUITE 150 AMBRIDGE, PA 15003 USA
TEL: (724) 266-1220 FAX: (724) 266-7174
AVE. RUBILINA 88, PARQUE INDUSTRIAL PALACO, MEXICALI, B.C.
TEL: (686) 582-7609 FAX: (686) 582-7615
E. MAIL: ENG@FORMGLAS.COM

FRP COLUMN W/TAPE JOINT ELEVATIONS/PLAN/DETAILS

DATE: SCALE: AS SHOWN
DRAWN: CHECKED:
DRWG:

DATE: 03_OCT_2011 - 4:43PM
FILE NAME: C:\BROAD\STANDARD DRAWINGS\FRP COLUMN DETAILS-TAPE JOINT.DWG